

INSTALLATION

Before commencing it is advisable to install Isolating valves on both hot and cold supplies for flushing out and servicing purposes. It is important that both supplies are flushed before connecting the shower control to ensure no debris enters the valve.
 Note: Your shower must be installed to local Water Authority Bye-Laws

UNEQUAL & HIGH PRESSURES

When unequal pressures are known, we recommend the fitting of flow regulators and also when high pressures are giving a flow rate of 5 litres or more to each inlet. These are fitted into the inlet elbow on installation and are indicated as items 14 and 15 on the parts list.

OPERATING PRESSURES

The valve will work within the pressure range of 0.1 bar (1 meter) to 10.0 Bars and at unequal pressures.

INLET SUPPLIES

The inlet elbows are screwed into the body giving the pipe centres adjustable between 110.0mm and 116.0mm. The pipe connections are 15mm compression with nuts and olives supplied.

SURFACING FIXINGS

The valve can be fitted to the wall by surface mounting. (fig. 1) The inlet elbows will rotate to receive rising or falling supplies or supplies through the wall.

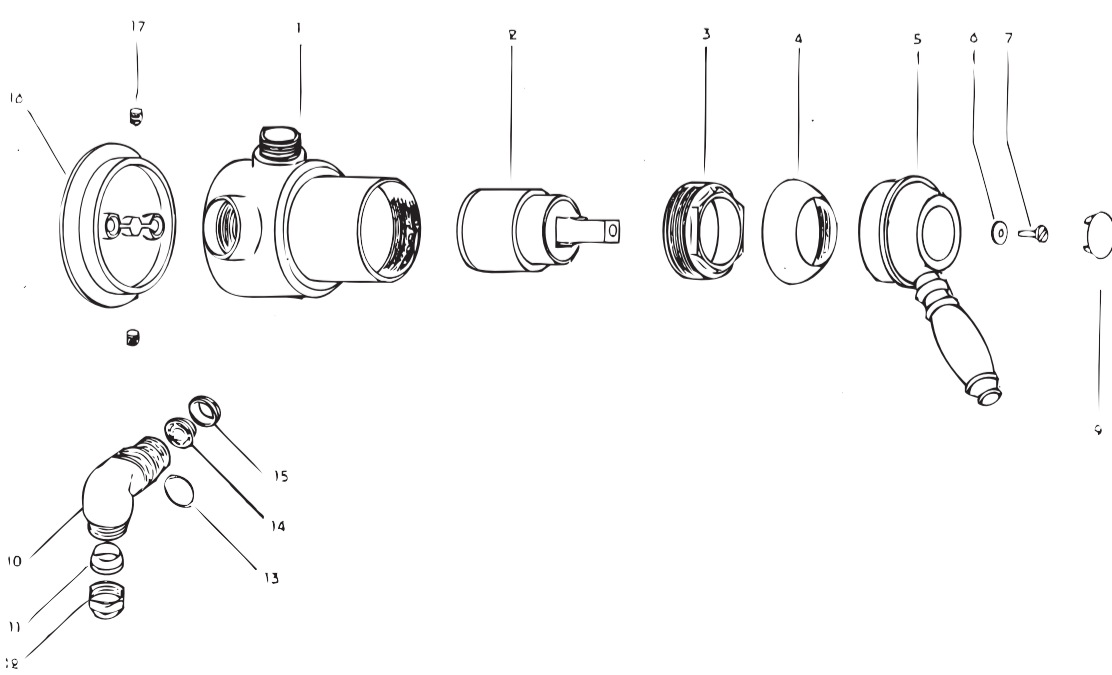
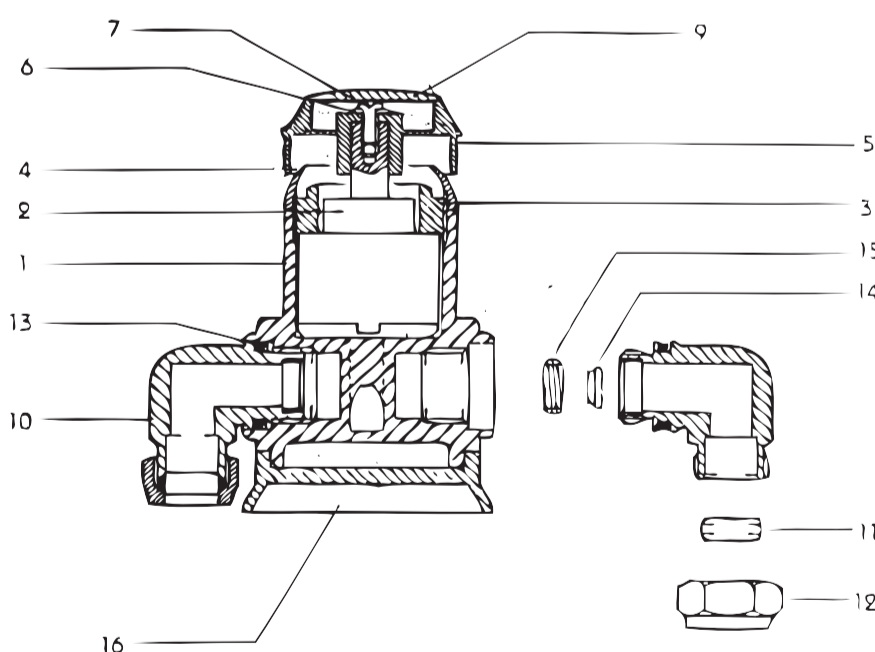
OPERATING INSTRUCTIONS

Lift the lever for flow, in the vertical position with hot water at about 65C and cold at about 16C the temperature is in the mid blend position, rotate the lever clockwise to increase the temperature and anti clockwise to lower the temperature. The control lever will shut off the water supply in any temperature position.

Renaissance

Part no. RE-65

Key No.	Description	Part No.	Key No.	Part No.
1.	Manual Body	150210	12.	9500-C1
2.	Cartridge	240300	13.	480117
3.	Stop Thread	680050	14.	970050
4.	Under Lever Cap	680051	15.	780033
5.	Lever	240035	16.	220010
6.	Washer	56301	17.	560302
7.	Cheese Head Screw	560300		
9.	Indice	780348AS		
10.	Elbow	150015		
11.	Compression Ring	9500-C2		



Part no. RE-65